

Installation



By IMTEC



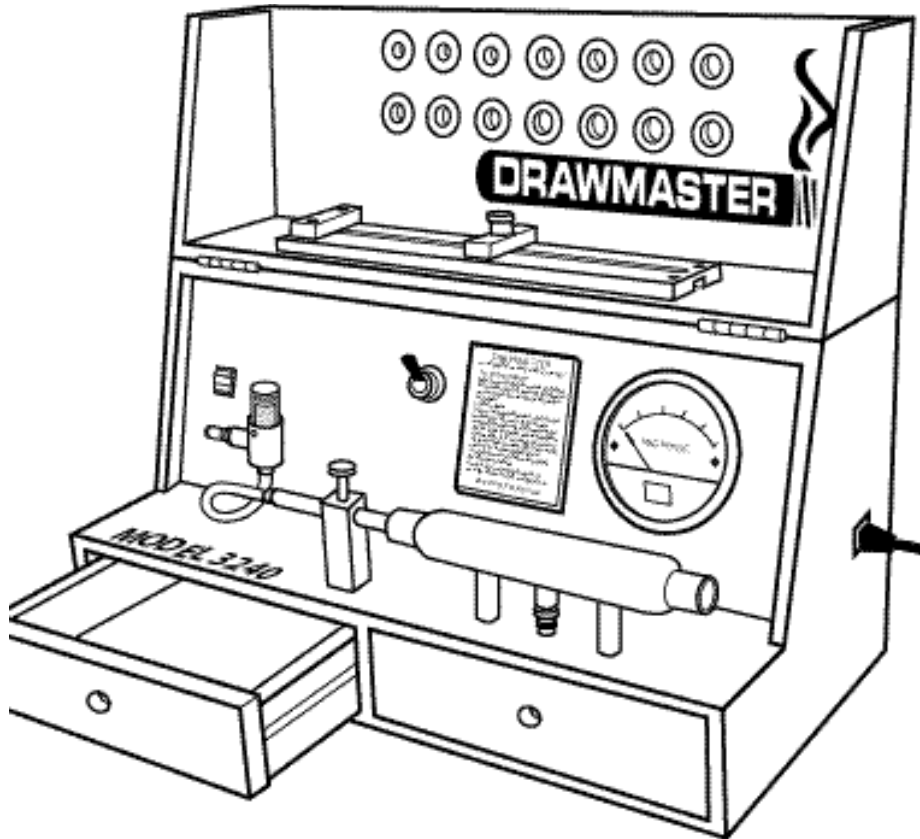
International Machine Technology, Inc.
 1305 Genoa Street • Post Office Box 979
 Waycross, Georgia USA 31502

Phone: (912) 285-1186 Fax: (912) 283-4400
 E Mail: www.imtec-inc.com

Contents

Features of the Drawmaster

General Information.....	1
Setup Procedure.....	2
Plugging in the Cord.....	3
Port Connection.....	4
Measuring Latex Tubing.....	5
Inserting Latex.....	6
Cutting Latex.....	7
Stretching Latex.....	8
Calibrating the Drawmaster.....	9
Testing Cigars.....	10
Magnehelic Gage.....	11
Removing Filter.....	12
Cleaning Filter.....	13



precisely tests draw

- ② **RING GAGES (OPTIONAL)**
tests the exact diameter of each cigar
- ③ **IDEAL LENGTH GAGE (OPTIONAL)**
with go/no-go positions
- ④ **EASY TO CLEAN FILTER**
keeps tobacco particles out of vacuum pump
- ⑤ **REMOVABLE CORD**
stores in drawer while transporting
- ⑥ **DRAWER**
contains 12 count box of 36" hygienic latex tubes
(approximately 48 uses)
- ⑦ **FOOT OPERATED SWITCH (OPTIONAL)**
not pictured

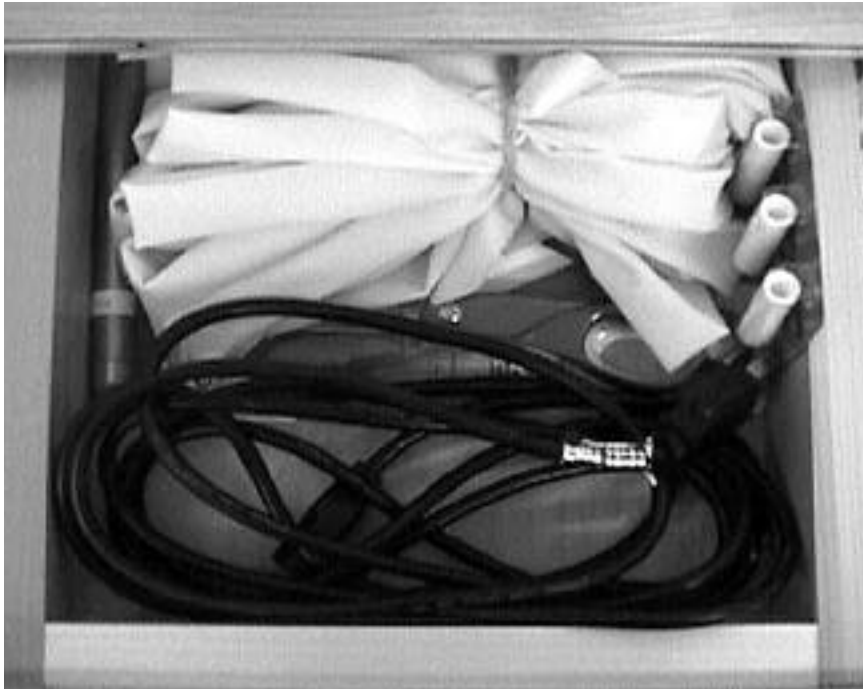
General Information

1. This machine should be placed in a position so that the vent holes on the left-hand side of the machine are free to pull ambient air into the vacuum system.
2. Obstruction of the airflow to these vent holes will cause damage to the vacuum system.

Caution: This machine is designed to operate on 110-volts at 60 HZ. Operation at a lower voltage will cause the vacuum pump motor to overheat. If this occurs, the machine will stop. A cooling down period of approximately one hour is required before the pump will start. Continuous overheating due to low voltage will damage the motor and negate the warranty.

* If low voltage is a problem, IMTEC can provide you with a low voltage protection system for your Drawmaster. Contact factory for pricing.

Features:	Double Stainless Steel Chamber Brass Ring Gages (optional) Ideal Length Tester (optional)
Weight:	40 lbs. Portable unit
Dimensions:	12" x 12" x 24" Custom maple case
Components:	Commercial components in a durable self-contained unit
Electricity:	110 volts operation - 60 cycle *(50 cycle box available)
Optional:	Carrying case available
Warranty:	One year guarantee on components



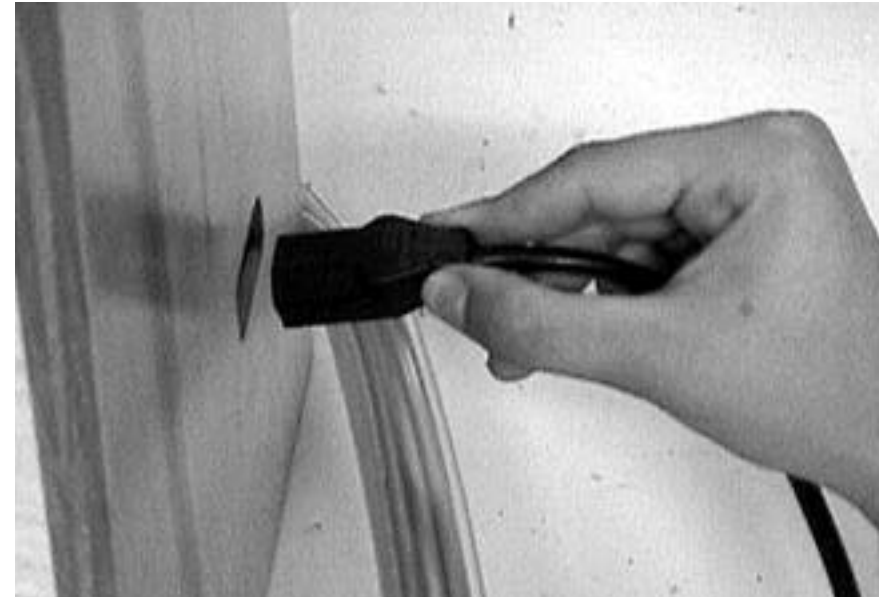
Setup Procedure

1. Open the left drawer.

*Note: The right drawer does not open.
It is for service only.*

2. The parts in the drawer are:
 - 1 black power cord
 - 3 replacement filter elements
 - 1 pair of scissors
 - 1 #40 Standard
 - 12 latex tubes 5/8 by 36 inches

2.



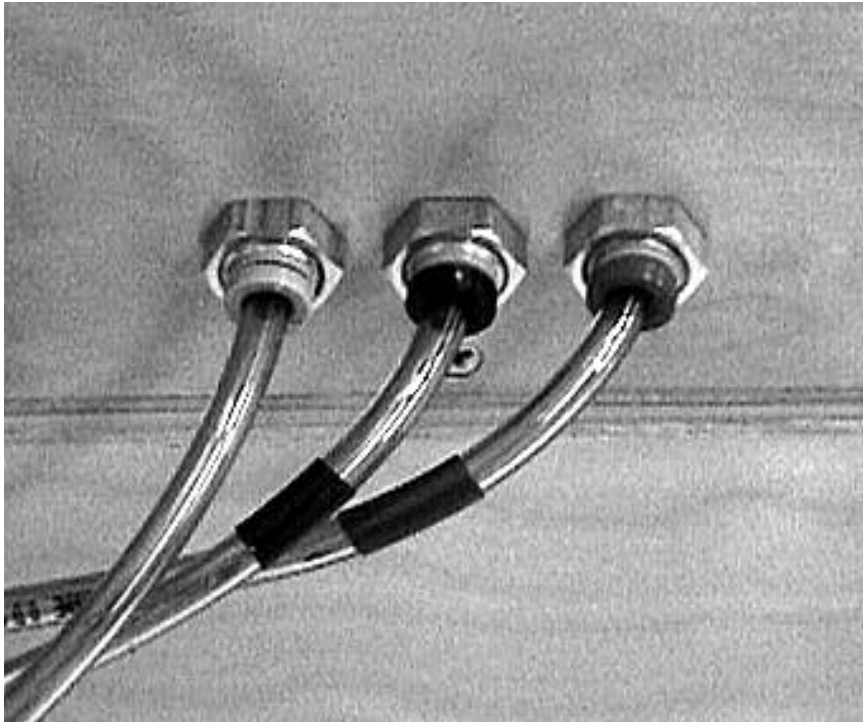
Plugging in the Cord

1. Remove cord from the drawer.
2. Plug the female end into the receptacle on right hand side of the machine.
3. Plug the male end into a 110-volt receptacle.

Caution: This machine is designed to operate on 110-volts at 60 HZ. Operation at a lower voltage will cause the vacuum pump motor to overheat. If this occurs, the machine will stop. A cooling down period of approximately one hour is required before the pump will start. Continuous overheating due to low voltage will damage the motor and negate the warranty.

If low voltage is a problem, IMTEC can provide you with a low voltage protection system for your Drawmaster. Contact factory for pricing.

3.



The foot valve hosing receptacles on the back of the Drawmaster.

Note: From this point on the directions will relate to the Foot Valve Model. Thumb Valve Models will operate the same.

1. Install vinyl tubing in receptacles located on the back of the Drawmaster.
2. The ports on the back of machine are labeled to match colored bands. Make sure to connect to proper port.

4.



Marking the tube at 8 1/2 inches.

Measuring Latex Tubing

1. Measure and mark latex tube at 8 1/2 inches.
2. DO NOT CUT latex tube before installing into the Test Chamber.
3. Install latex tube in Test Chamber after marking.



Stretching the latex.

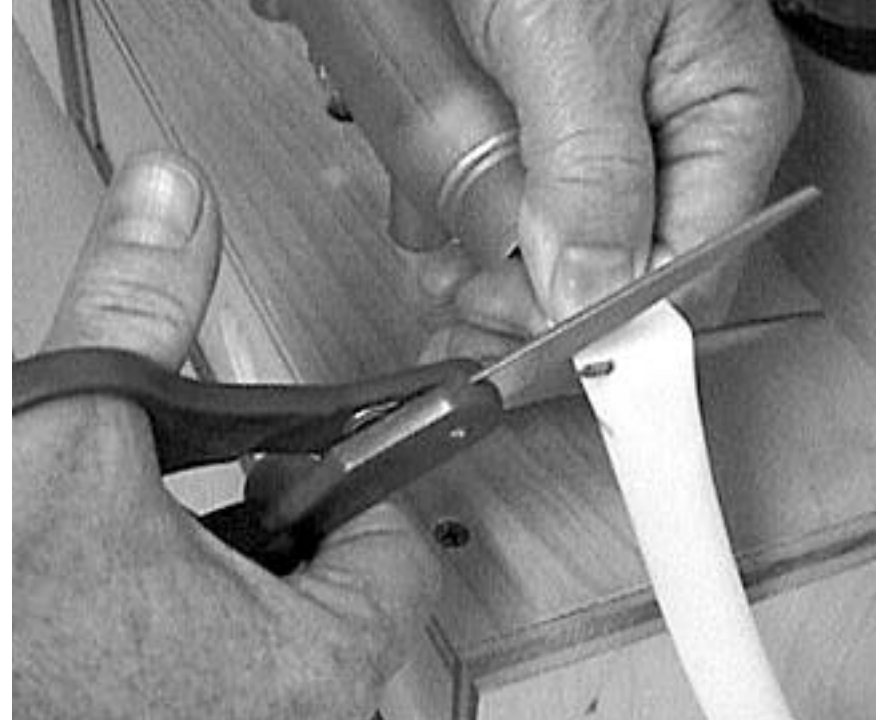
1. Stretch latex over Mandrel side of Test Chamber.

5..



Inserting the latex through the Test Chamber.

1. Stretch latex through the tube until the mark is exposed.
2. Hold latex with your left hand and cut at 9 inch mark.



Cutting latex.

1. Cut latex tubing at the mark with scissors.



Stretching latex tube over end of Test Chamber.

1. Pull latex tube through Test Chamber and roll excess over tube end.
2. Make sure to keep the hole in the middle of the tube centered when installing latex.



Inserting the #40 Standard.

Calibrating the Drawmaster

1. Turn on the machine.
2. Insert the #40 Standard into the Test Chamber, leaving approximately 1/2 inch protruding from the end of the tube.
3. Depress the Foot Valve or move the Thumb Switch to test position.
4. Magnehelic Gage should read 40 (more or less 10%).
5. Release the Foot Valve or move switch from test position and remove standard.



Insert cigar and leave 1/2 inch protruding from Test Chamber.

Testing Cigars

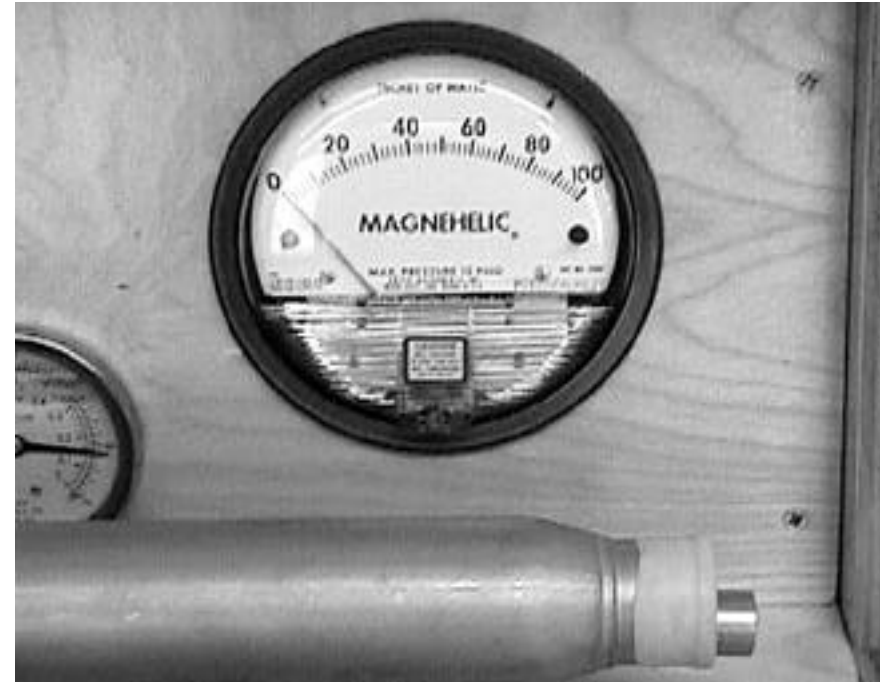
1. Insert bunch, head end first, leaving 1/2 inch protruding from the Test Chamber.

Note: Finished cigar may be tested before cap is applied or if cap is removed.

2. Depress Foot Valve or move switch to test position.

Notice the Magnehelic reading. This is your Drawmaster number. We consider a reading of 40 the best draw. Each customer should determine through their own test what is acceptable and what is not.

3. Release the Foot Valve or move switch from test position. Remove cigar.



Magnehelic Gage

Accurately measure optimal draw.



20-30 Light

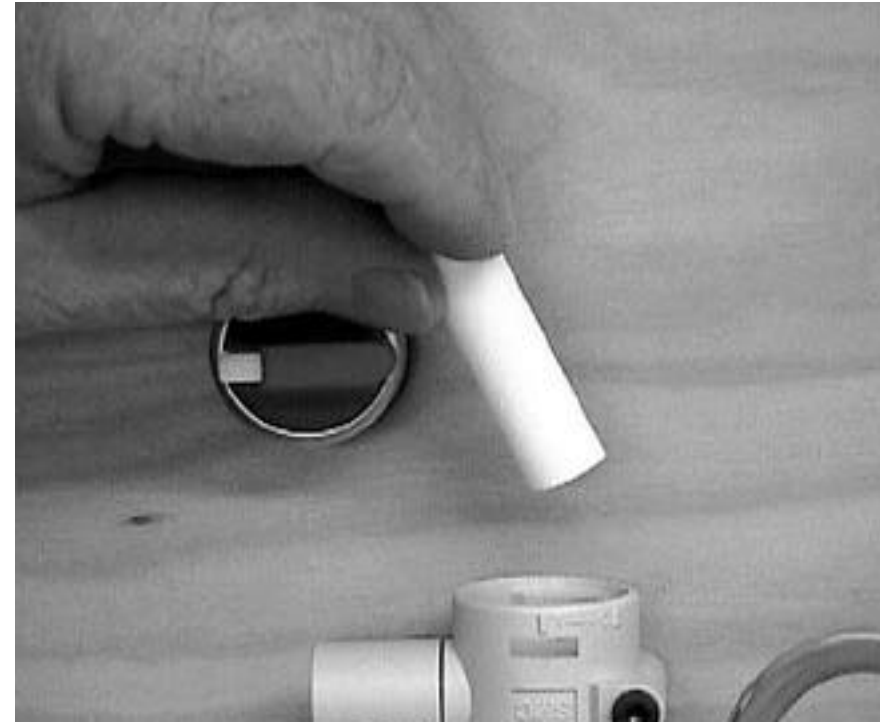
30-40 Medium

40-60 Heavy



Removing Filter

1. Remove filter by turning clear plastic cover counter clockwise and then pulling up.



Cleaning Filter

1. Remove filter cartridge and clean tobacco particles from filter housing and filter.
2. Replace filter every 10,000 cigars.
3. Reverse procedure to install filter.

Note:

Dirty filter will cause an incorrect gage reading.